

# Christmas 2021 Newsletter

Memory Lane Cafe Calderdale  
Registered Charity 1178595

**Welcome** to our Christmas 2021 newsletter.

Whilst the pandemic continues we'll carry on running our cafes as we've done since September 2020 – with table service and separate morning/ afternoon sessions to minimise crowding. We clean the room before each session and all volunteers wear face-coverings during cafes. We're also ventilating the room by keeping doors and windows open as much as possible. As of December 10<sup>th</sup> we ask everyone to wear masks when moving around the room. Thank you to our members who have given us such great feedback over the past year - not only about the reopened cafes but also about how safe people felt.

Please continue to book in advance – it helps us to plan the seating. We've worked hard to make sure that the cafes are still fun – just different!

To find out more and to book call June our Cafe Co-ordinator on **01422 706373** or **07920 549131** or you can email her on [june@memorylanecafe.org](mailto:june@memorylanecafe.org)

## A BIT ABOUT US

We are a local community group providing support for people affected by dementia, other memory problems, and isolation. We have been running our regular cafes in Sowerby Bridge (at St Paul's Methodist Church) and in Halifax (now at Boothtown Methodist Church) for the past few years. We offer a varied and changing programme of games, information, support, cakes and conversation. We are all volunteers and our cafe team play games, serve refreshments, and provide information, support & chat.

## LIVE MUSIC IS BACK!

This summer we were delighted to be able to begin to welcome back live musical entertainers at our cafes. This was in response to a poll of our members who, overwhelmingly, voted for a return of live entertainment.



Our 2021 entertainers have been Dave & Roy, Jed & Maggie (above), the many Splinters (below), Tony Austin, Trevor & Helen, and Ukelele Henry.



## BUT ZOOM MUSIC ENDS!

For much of Lockdown we were running a weekly Zoom musical get-together. It gave members a chance to chat with friends - and to join in a singalong with live music from Tony Austin. It was very popular with those members who were able to get on-line but definitely couldn't beat the real thing!

## GETTING OUT AND ABOUT THIS AUTUMN

With the lifting of COVID restrictions we've been able to run various trips during the autumn. In September we enjoyed four separate days out on the water with Anchor Trust boats at Mirfield. Miraculously, the sun shone every time!



In November, 40 of us visited Blackpool for a special "fish & chip" tram tour of the illuminations.



.....in December we're off to the pantomime Sleeping Beauty at Viaduct Theatre.

## TESCO BOOK SALE

Tesco in Sowerby Bridge have a book sales table for the benefit of local community groups. Memory Lane will run it in January, so please let us have any of your spare books. You can bring them to a cafe or simply deliver them straight to the sales table at Tesco. We'll use all of the proceeds to help fund trips in 2022.

## TEA FOR (MORE THAN) 2



In November, over 60 members and volunteers enjoyed an afternoon tea party arranged by our friends at Bridge Community group. The Bridge Community team did all the work, serving refreshments and running the bingo session. Ukelele Henry provided the music.

## MUSIC IN THE OPEN-AIR



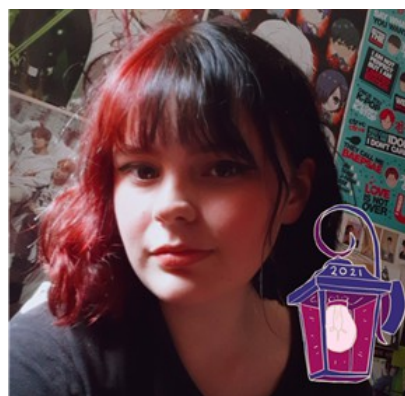
Keen to get back to live music was Bob along with Tony Austin at the Darkland Festival in June – when music indoors was still not allowed. The sun shone!

## CAFE ART



Sowerby Bridge Art Circle recently visited the cafe armed with paints, brushes, canvas and tutors. Many members took up the challenge and produced a range of works. These, plus pictures from the last visit of Art Circle in 2020, will soon be exhibited at Sowerby Bridge Library.

## VOLUNTEERS BADGE



Earlier this year, Calderdale VSI (Voluntary Sector Infrastructure) asked Georgia (one of our volunteers – she's also an illustrator) to design a badge to recognise the work done by all kinds of volunteers during the pandemic. She says that this gave her a wonderful opportunity to explore a different area of art. These "lantern" badges are now worn across Calderdale.

## WHERE TO IN 2022?

We all certainly want to get out more next year – we've got a lot of catching up to do! We'd like your ideas for places to go and things to do. We can certainly do more of what we've done before (boat trips, shopping days, theatre etc) but please do let us have any other ideas you may have.

## LET'S HAVE YOUR IDEAS FOR OUR COVID CAFES

We've been running "COVID" cafes for over a year now. We introduced bingo and various table games to minimise mixing. Are there any other activities you'd like to see at our cafes whilst COVID restrictions do still apply – it is probably going to be a while before we fully get back to "normal". Please let us have your ideas – we'll do our best to make them happen.

## DRIVERS NEEDED!

For some of our members, getting to our cafes can be a challenge. Our volunteer drivers provide the solution. They use their own car (mileage payment available or, sometimes, a minibus). Would you like to join them? You'll be helping to make our cafes accessible to all. Training and support is available – for more details please call June (Volunteer Manager) on **01422 706373** or **07920 549131**.

